

# PayPalOAuth

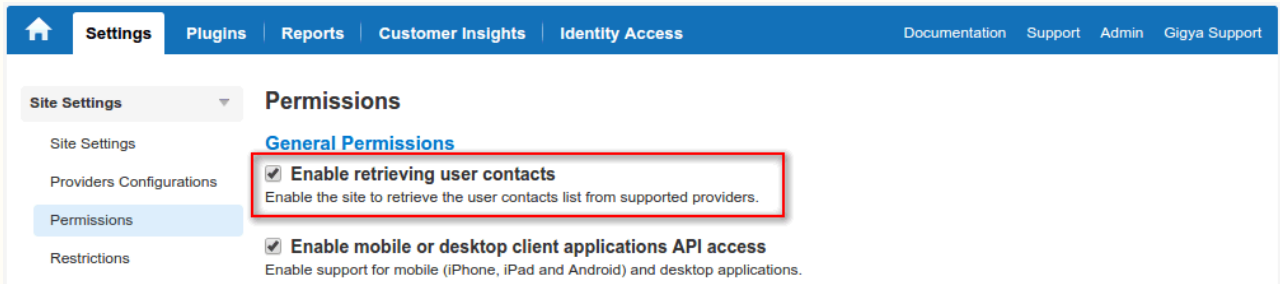
This page is a step-by-step guide for the process of opening and setting up an external application in PayPal as part of the [Gigya Setup](#) process.

To receive assistance from the Gigya team with your app's configuration, visit the [Support](#) tab in your console.

If your site is defined under one of Gigya's non-US data centers, replace domain references to (<http://> or <https://>) "[socialize.gigya.com](http://socialize.gigya.com)" (or "[socialize.us1.gigya.com](http://socialize.us1.gigya.com)") with "[socialize.<DC>.gigya.com](http://socialize.<DC>.gigya.com)". Where *<DC>* is the region of your Data center (e.g., "[socialize.eu1.gigya.com](http://socialize.eu1.gigya.com)" for European Data center).

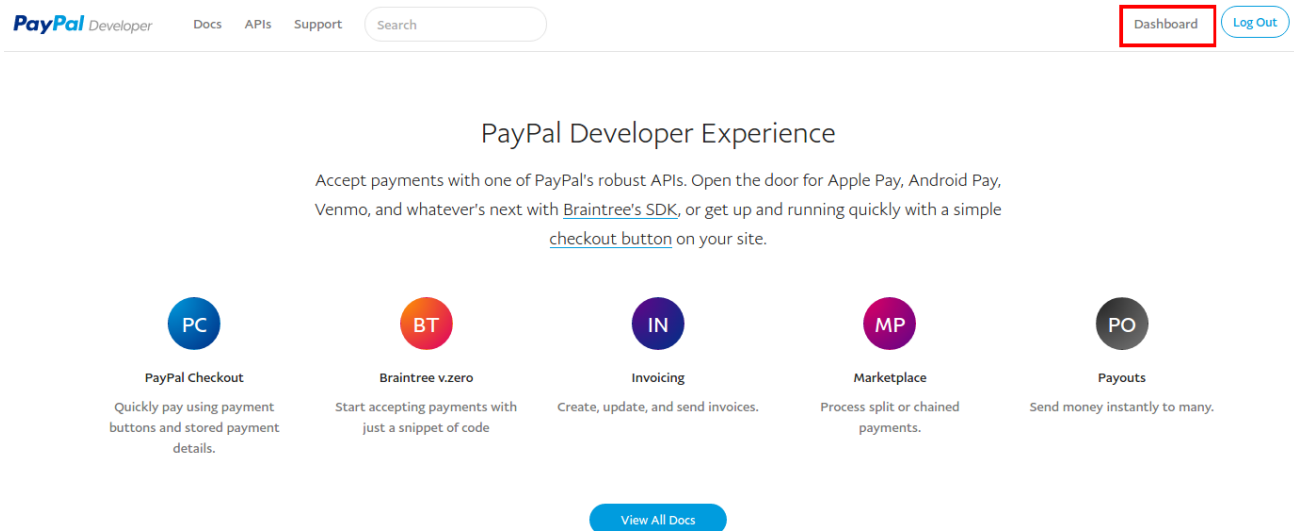
Domain references are defined in Gigya's [dashboard](#), externally in social network app definition pages, and when using Gigya's SDKs to set the domain (in particular the *APIDomain* field in class *GSRequest*).

When using any 3rd Party Apps with Gigya, it is important to ensure that you **Enable retrieving user contacts** from the [Permissions](#) page of the [Console](#) prior to making your app live. This enables the user's contacts retrieval from providers that don't consider this an elevated permission.



## Phase 1 - Creating Your App

1. Go to the PayPal App center at <https://developer.paypal.com/> and log in to your account.
2. Enter the **Dashboard**.



3. Click **Create App**.

**Dashboard**

**My Apps & Credentials**

My Account

**Sandbox**

Accounts

Notifications

Transactions

IPN Simulator

Webhooks Simulator

Webhooks Events

**Live**

Transactions

Webhooks Events

## v.zero SDK

Test your PayPal Checkout integration in the Sandbox using v.zero SDK and our [set up instructions](#). To go live please follow these [steps](#).

**Note:** You can have a maximum of 5 v.zero credentials per account. Only one credential can be generated per sandbox account.

Generate Credential

Sandbox Account

Create your first credential to view it here.

## REST API apps

Create an app to receive REST API credentials for testing and live transactions.

**Note:** Features available for live transactions are listed in your [account eligibility](#).

Create App

App name

Create your first app to view it here.

4. Enter a **name** for your app.
  - a. Note you can only use letters, numbers, and spaces.

# Create New App

Create an app to receive REST API credentials for testing and live transactions.

**Note** Features available for live transactions are listed in your [account eligibility](#).

### Application Details

**App Name**

**Sandbox developer account**

.....-facilitator@..... (US) ▼

As a reminder, all apps created under your account should be related to your business and the type of business it conducts.


By clicking the button below, you agree to [PayPal Developer Agreement](#).

[Create App](#)

5. Be sure you are in the **Live** version of the app configuration. If you create the app in **Sandbox** mode, you will need to re-configure all settings when enabling **Live** mode.

## Gigya Doc Test September 2016

[Sandbox](#) [Live](#)


App display name: Gigya Doc Test September 2016 

### LIVE API CREDENTIALS

**!** Please note that not all features are available for live. Features available for live transactions are listed in your [account eligibility](#).

Live credentials will be available when you upgrade to Premier or Business account. [Upgrade to Premier or Business account](#)

6. If your PayPal account is a Premier or Business account, you will see your app credentials here:

App display name: Gigya Doc Test September 2016 

### SANDBOX API CREDENTIALS

**Sandbox account**  
[redacted]-facilitator@

**Client ID**  
AetxXLdM [redacted] dpV3ni

**Secret**  
[Hide](#)

**Note:** There can only be a maximum of two client-secrets. These client-secrets can be in either "Enabled" or "Disabled" status.

Created	Secret	Status	Action
Sep 18, 2016	E [redacted] y-	Enabled	<a href="#">Disable</a>

[Generate New Secret](#)

### SANDBOX WEBHOOKS

7. In the LIVE APP SETTINGS section, enter your Return URL, which will be either your sites CNAME or [https://socialize.<data\\_center>.gigya.com/GS/GSLogin.aspx](https://socialize.<data_center>.gigya.com/GS/GSLogin.aspx).

### LIVE APP SETTINGS

**Return URL** - Where users will be redirected after live transactions. Please allow up to 3 hours for the change to go into effect. [Hide](#)

[+](#) [-](#)

8. In the **App feature options**, un-select the boxes labeled:
- Accept payments**
  - Invoicing**
  - Payouts**

9. In the **Log In with PayPal** section, open the Advanced options and select:

- **Personal Information**
- **Address Information**
- Open the **Account Information** Advanced options and select:
  - **Time zone**
  - **Locale**
  - **Language**

#### App feature options

- Accept Payments** Accept one-time and subscription payments from PayPal members using PayPal and direct credit card processing.
- Invoicing** Issue invoices for payments owed, manage partial balances due, and enable custom net payment terms.
- Payouts** Send batch payments to multiple PayPal accounts at once. You can vary the amount by recipient and select if you'd like it delivered by phone number or email.
- PayPal Here** Process swiped/card-present card transactions.

- Log In with PayPal** Identity service that enables your customers to log in with their PayPal login. [Hide](#)

#### Information requested from customers

Select scope attributes for OpenID connect (OAuth) protocol. You are requesting your customers to share this data with you.

- Basic authentication**  
No information is requested from customers. Only a unique identifier (PPID) is provided to you.
- Personal Information** [Customize](#)
- Address Information** [Customize](#)
- Account Information** [Hide](#)
  - Account status (verified)
  - Account type
  - Account creation date
  - Time zone
  - Locale
  - Language

10. Select **Allow the customers who haven't yet confirmed their email address with PayPal, to log in to your app.**

11. Enter a valid URL for both **Privacy policy** and **User agreement** URL fields.

### Links shown on customer consent page

#### Privacy policy URL

<http://www.gigya.com/privacy>

#### User agreement URL

<http://www.gigya.com/terms>

[Add customer support email ID](#)

[Preview the customer consent page](#)

#### Additional PayPal permissions

Use Seamless Checkout

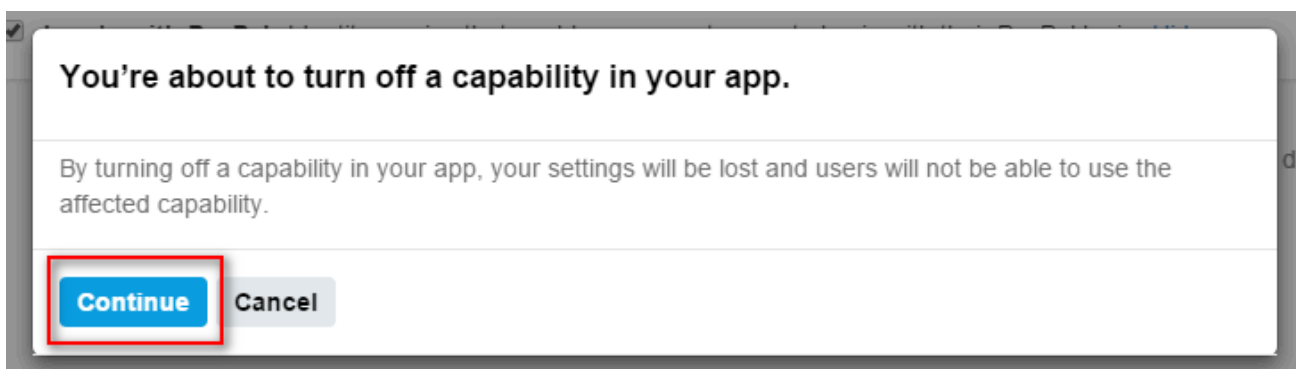
After your customers login with PayPal, they don't need to log in again at checkout (within an hour)

Allow the customers who haven't yet confirmed their email address with PayPal, to log in to your app.

Save

[Cancel](#)

12. Finally, **Save** your app. (Be advised that the PayPal session time is approximately 10 minutes, so if it takes you longer than that to configure your app, you may need to start over).
13. Click through the warning that you are turning off some app capabilities. This is because we disabled some feature in Step 8, above.



14. You should now see an **Application saved successfully** notice on the page (or an error describing the issue).

Add Webhook

Application saved successfully ×

**SANDBOX APP SETTINGS**

**Return URL** - Target URL where users will be redirected after test transactions. Please allow up to 3

15. Leave this page open and proceed to **Phase 2 - Configuring PayPalOAuth in the Gigya console** (below).

You must complete this entire process (above), within the session length of PayPal, which is approximately 10 minutes, or you will lose any data not saved in the configuration.

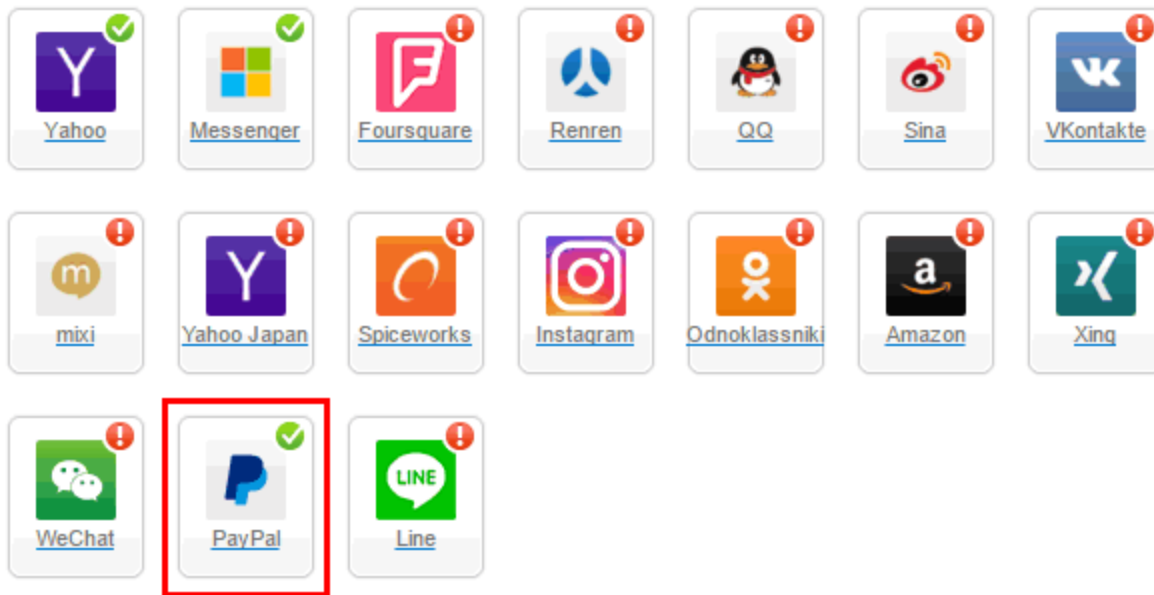
## Phase 2 - Configuring PayPalOAuth in the Gigya console

1. Open the [Providers Configuration](#) page of Gigya's Console.
2. Select **PayPal** from the list of providers.

## Main Social Networks

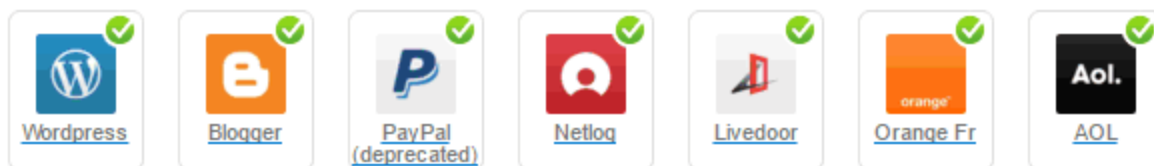


## More



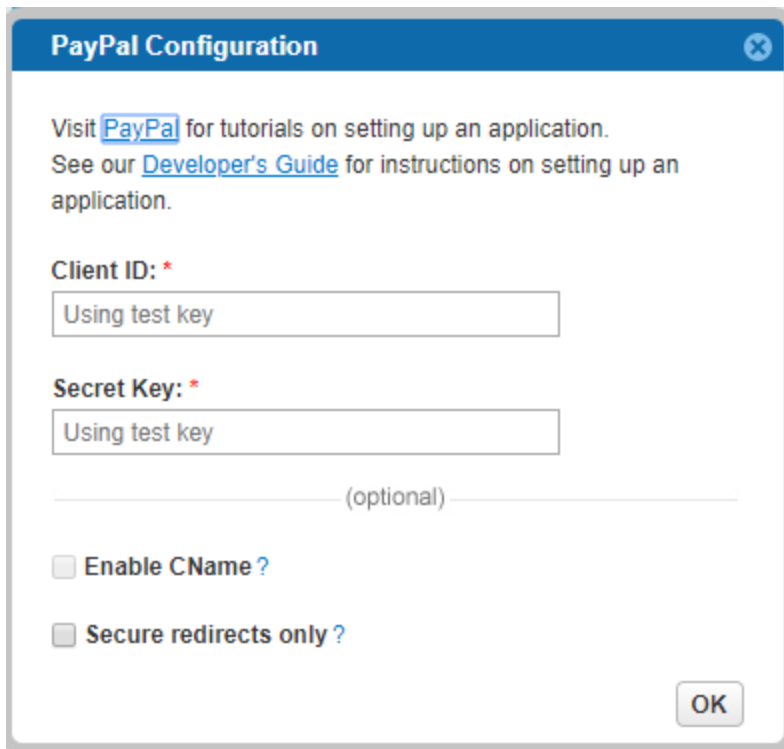
## Providers that don't Require Configuration

Enable CNAME for all OpenID providers



3. In the dialog that appears, from the PayPal app configuration page still open from **Phase 1**, copy and paste both your **Client ID** and **Secret** into the corresponding fields of the dialog.
  - a. Be sure to check the **Enable CName** box, if you are using a CName in your app's **Return URL** field from **Phase 1** (above).
  - b. **Important:** The **Sandbox** and **Live** Client ID/Secret pairs are different, ensure you are copying the keys from the **Live** version of your app.
  - c. Select **Secure redirects only** to allow only HTTPS redirects from PayPal.





**PayPal Configuration**

Visit [PayPal](#) for tutorials on setting up an application.  
See our [Developer's Guide](#) for instructions on setting up an application.

**Client ID: \***  
Using test key

**Secret Key: \***  
Using test key

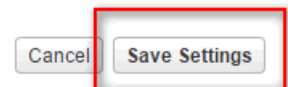
\_\_\_\_\_ (optional) \_\_\_\_\_

Enable CName ?

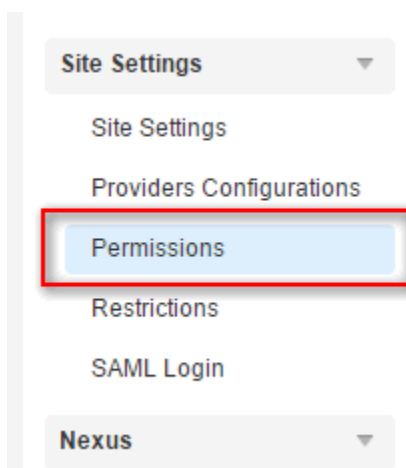
Secure redirects only ?

OK

- Click **OK** to close the dialog.
- Press the **Save Settings** button in the lower-right of the **Providers Configurations** page.



- You can set additional permissions regarding the information Gigya requests from PayPal by going to the **Permissions** page of the Gigya console via the left-hand menu.



- Here you can choose whether to gather the users **Email address**, **Street address**, and/or **Phone number** by selecting the corresponding options and clicking the **Save Permissions** button on the lower right-hand section of the page.

**PayPal Permissions**

**Enable retrieving email address**  
Retrieving email addresses lets the site access the user's primary email address.

**Enable retrieving user's address**  
Retrieving user's address lets the site access to the user's address (country, state, city, street and zip code).

**Enable retrieving user's phone**  
Retrieving user's address lets the site access to the user's phone number.

Cancel **Save Permissions**

8. **That's it, PayPalOAuth configuration is complete!** Please note that it can take from 1 minute to 3 hours for configurations made in PayPal to become synchronized.

If you have issues getting your app to function properly due to entering an incorrect **Return URL** during the initial app setup, it is often more effective to create a new app, being sure to enter the correct **Return URL** at setup, then waiting on PayPal to synchronize a change.

## Additional Information

For more information, please see <https://developer.paypal.com/docs/>.